

LOCS *Lowest Operating Cost Solution*

In today's economy, good business means making your money go a long way. This is why we are committed to:

- Design and manufacture the most durable and reliable products available
- Offer our high-performance products at affordable prices
- Provide a full product line-up to optimize your productivity
- Maximize product availability to reduce downtime
- Give the best technical support and service in the industry

Find out more at camoplastsolideal.com or contact your authorized distributor.



CONSTRUCTION
RUBBER TRACKS



AGRICULTURAL
RUBBER TRACKS



SNOWMOBILE
RUBBER TRACKS



ATV / UTV
RUBBER TRACK SYSTEMS



CONSTRUCTION
TIRES



CONSTRUCTION
WHEELS



MATERIAL HANDLING
TIRES



MATERIAL HANDLING
WHEELS



Authorized distributor:



**CARGO
LOADER**



**PUSHBACK
TRACTOR**



**BAGGAGE
TRACTOR**



**BAGGAGE
CART**



**BOARDING
BRIDGE**

GROUND SUPPORT EQUIPMENT TIRES & WHEELS



Lower your cost of operation

LOCS

High-performance tires and wheels from the leading brand in material handling to increase productivity and lower the cost of operation in the airport industry



CARGO
LOADER



PUSHBACK
TRACTOR



BAGGAGE
TRACTOR



BAGGAGE
CART



BOARDING
BRIDGE

camoplastsolideal.com

SOLIDAIR
Technology



INDUSTRY-LEADING DURABILITY, RELIABILITY AND PERFORMANCE:

- World-leading material handling tire manufacturer
- Advanced engineering and design innovation to extend life and reduce downtime
- Optimal traction and ride quality per application
- Full service offer

SOLIDEAL SolidAir GSE

ADVANCED APERTURE CURED-ON TIRE TECHNOLOGY



SOLID TIRE WITH FEA-VALIDATED APERTURE DESIGN

- ✓ **UP TO 16% LESS ROLLING RESISTANCE THAN SOLIDEAL RIB 2L**
Reduces wear and provides fuel/energy savings
- ✓ **IMPROVED LATERAL STABILITY ABOVE 2000N**
Reduces wear on axle components and vibration level
- ✓ **NO ADDITIONAL BOLTS**
Limits potential for ramp debris
- ✓ **REDUCES CART SNAKING FOR IMPROVED SAFETY**

RUBBERPRO ADVANCED COMPOUND EXPERTISE



Based in the heart of the world's largest rubber production region, our team of dedicated R&D experts ensures that all our tires are made with tough, anti-abrasion, tear-resistant rubber compounds that can handle the most severe job conditions and provide ultimate durability.

CARGO LOADER / PUSHBACK TRACTOR



SOLIDEAL Xtreme (Solid Resilient tire)

INDUSTRY-LEADING DURABILITY & PERFORMANCE

Excels in 3-shift, high-load and long-run demanding applications



EXTRA-DEEP TREAD WITH WEAR INDICATOR
Provides superior life and eases tire management



CONTINUOUS CENTER LUG
Reduces vibration and tire noise

- Increased operator comfort
- Slows wear on driveline components
- Lower maintenance and replacement costs



WIDE TREAD PROFILE
Increases lateral load stability by 20%

- Safer in high-lift and cornering situations



Cargo Loader

POPULAR SIZES

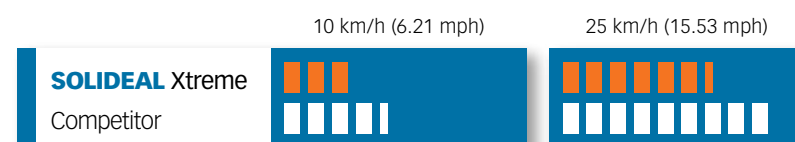
- 300 - 15
- 32 x 12.1 - 15
- 355 / 65 - 15
- 10.00 - 20
- 12.00 - 20
- 12.00 - 24
- 14.00 - 24
- 16.00 - 25

Pushback Tractor

POPULAR SIZES

- 10.00 - 20
- 12.00 - 20
- 12.00 - 24
- 14.00 - 24
- 16.00 - 24

Solideal Xtreme shows the lowest vibration level on the tire test bench



SOLIDEAL Magnum (Solid Resilient or Press-on tire)

THE GOLD STANDARD IN RELIABILITY



WIDE PROFILE AND FLAT FOOTPRINT
Increases stability and grip



HUGE LUG DEPTH
Maximizes life and traction



PREMIUM 3-STAGE RUBBER COMPOUNDING
Improves wear rate and ride quality

Solid Resilient or Press-on to suit your needs



SOLIDEAL Hauler LT (Industrial Pneumatic tire)

UNBEATABLE DURABILITY AND PERFORMANCE



MASSIVE TREAD BLOCKS AND DEEP LUGS
Extend service life in severe applications



WIDE SQUARE TREAD PROFILE
Provides superior stability



REINFORCED UNDERTREAD
Increases puncture resistance



WIDE SIDEWALL WITH RIM GUARD
Provides best side impact resistance

• 3X more rubber than standard tires

NEW

SOLIDEAL ED Plus (Industrial Pneumatic tire)

+ 25% LIFE THAN STANDARD TIRE



BALANCE OF DURABILITY, PERFORMANCE AND COMFORT WITH A UNIQUE STAGGERED TREAD DESIGN
Reduces vibration



WIDE FLAT PROFILE AND DEEP TREAD
Improves traction and life



WIDE SIDEWALL
Provides best side impact resistance

• 2X more rubber than standard tires

Lower your cost of operation



Service life

SOLIDEAL Xtreme + 30%

Leading competitor

- Less downtime and lower replacement costs

Rolling resistance

- 10% **SOLIDEAL Xtreme**

Leading competitor

- Less energy consumption

BAGGAGE TRACTOR / CART

BOARDING BRIDGE

SOLIDAIR
Technology

SOLIDEAL SolidAir ZZ RIB

PUNCTURE-FREE TIRE FOR BAGGAGE TRACTORS



SOLID TIRE WITH FEA-VALIDATED APERTURE DESIGN

- Longer life than pneumatic tire while maintaining riding comfort

SIZES

- 6.00 - 9 / 4.00
- 6.50 - 10 / 5.00
- 7.00 - 15 / 5.50

SOLIDEAL PBB

MAINTENANCE-FREE BOLT-ON SOLUTION



IDEAL FOR HIGH-CYCLE AIRPORTS DEMANDING 100% UPTIME

- Engineered to world-leading OEM specifications
- Provides maximum safety, life and maneuverability
- Eliminates high maintenance costs of air pressure

POPULAR SIZES

- 40 x 16 x 30
- 28 x 10 x 22
- 28 x 16 x 22
- 22 x 14 x 16
- 28 x 12 x 22

SOLIDEAL ZZ RIB

MAXIMUM TRACTION FOR BAGGAGE TRACTORS



IDEAL FOR HIGH-TORQUE MACHINERY

- Improves braking and handling
- Improves maneuverability
- Increases battery life and reduces fuel consumption

POPULAR SIZES

- 5.00 - 8
- 7.00 - 12
- 6.00 - 9
- 8.00 - 16.5
- 6.50 - 10

SOLIDEAL RIB

MAXIMUM LIFE FOR BAGGAGE CARTS



AVAILABLE AS A PNEUMATIC OR SOLID RESILIENT

- Low rolling resistance
- Increases battery life and reduces fuel consumption

POPULAR SIZES

- 4.00 - 8
- 6.50 - 10
- 6.90 - 9

SOLIDEAL INDUSTRIAL WHEELS

Heavy-duty construction and superior steel quality

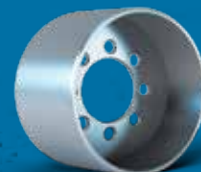
Available in a wide range of sizes



MULTIPIECE



SPLIT WHEELS



PRESS-ON



Lowest Operating Cost Solution

DURABILITY = Longer service life

SOLIDEAL

Competitor

RELIABILITY = Less downtime and lower replacement costs



SOLIDEAL



Competitor

HI-PERFORMANCE = More productivity

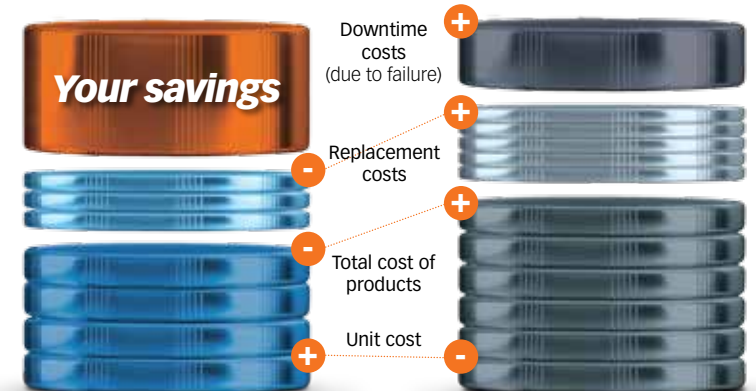


SOLIDEAL

Competitor

TOTAL COST OF OWNERSHIP

(over effective operational life of machine)



SOLIDEAL

COMPETITOR

Solideal reduces your total cost of ownership