

SUPPORTING YOUR PRODUCTIVITY CHALLENGES

EXTENSIVE RANGE OF PRODUCTS

We offer a wide selection of specialized tires for all your port activities, spanning the unique needs of terminal trailers, terminal tractors and straddle carriers among others.

BEST-IN-CLASS SERVICE

A worldwide footprint with locally adapted service: our extended distributors, dealers and partners network allows us to offer personalized support, adapted to your specific requirements.

TRUSTED BY OEMS AND INDUSTRY LEADERS

We have been working closely with OEMs and industry leaders for decades to develop tires that are tailored to your individual needs on any machine or application.

SUSTAINABILITY

With the aim of being a driving force in sustainable mobility, our vision for the next thirty years is that by 2050, our tires will be entirely produced with sustainable materials and that every effort is made, across every industry stakeholder, to ensure that 100% of end of life tires are recycled or reused.

WE HANDLE IT



business.michelinman.com/construction-industry/port-handling
business.michelin.co.uk/construction-industry/port-handling



camso.co

UPDATED JUNE 22



PORTS & TERMINALS

TIRE RANGE AND SERVICES

BUILDING ON RELIABILITY AND PERFORMANCE

At Michelin, with Camso, we accelerate your activities for more efficiency. As off-the-road mobility specialists, we developed our expertise in the field, with our clients and partners, understanding and foreseeing the challenges of today and tomorrow's ports industry.

Our products are engineered and manufactured with rigorous quality standards to guarantee the safety and reliability of your operations. Be it radial, bias, solid resilient or press-on tires, we have the technology and the range to match your needs.

HELPING PORTS AND TERMINALS DELIVER ON THEIR EFFICIENCY TARGETS

To help you meet today's safety and vessels turnaround time challenges, our experts have developed specially adapted tires and services that help you manage the toughest load and speed requirements, such as twin lift operations or shuttle carriers.

By creating strong and close relationships with our clients, we also have the ambition of being a key partner in the race for automation and sustainable operations. For any challenge, for any application, you name it -

WE HANDLE IT.



“ Seeking reliable solutions that offer durability and that reduce operating costs is one of the many challenges faced by the ports industry. Assessed by our experts, one of our clients in Turkey switched to a puncture-proof solution to replace the truck tires previously used on their container trailers, which turned out to be a success: twelve months after initial tests, all their trailers had been fitted with our solid resilient tires, providing excellent results. ”



INDUSTRY STANDARD



UNDER SPECIFIC CONDITIONS

For Rubber Tire Gantry tires and other specialty equipment, please consult your tire dealer. Please contact your local representative or technical department for more support.



TERMINAL TRAILERS

INDUSTRIAL PNEUMATIC	RADIAL		MICHELIN X TERMINAL-T	
	RESILIENT			
SOLID	RESILIENT		SOLIDEAL SM SL+	
	PRESS-ON		SOLIDEAL SM SRP/SRP+	



TERMINAL TRACTORS

INDUSTRIAL PNEUMATIC	RADIAL		MICHELIN X TERMINAL-T
	BIAS		SOLIDEAL HAULER LT



STRADDLE CARRIERS

INDUSTRIAL PNEUMATIC	RADIAL		MICHELIN X STRADDLE 2
----------------------	--------	--	-----------------------



HEAVY CAPACITY FORKLIFT TRUCKS (>18T)

INDUSTRIAL PNEUMATIC	RADIAL			
	RADIAL		MICHELIN X STACKER 3 HD	
BIAS	RESILIENT		SOLIDEAL HAULER LT	
	SOLID		SOLIDEAL RES 550 MAGNUM SERIES	



EMPTY CONTAINER HANDLERS

INDUSTRIAL PNEUMATIC	RADIAL		MICHELIN XZM
	BIAS		SOLIDEAL HAULER LT



AUTOMATIC GUIDED VEHICLES (AGV)

INDUSTRIAL PNEUMATIC	RADIAL		MICHELIN X AGV EV
----------------------	--------	--	-------------------



LADEN CONTAINER HANDLERS

INDUSTRIAL PNEUMATIC	RADIAL			
	RADIAL		MICHELIN X STACKER 3 HD	



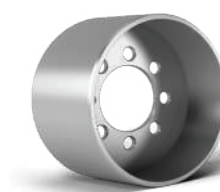
REACH STACKERS AND LOGGERS

INDUSTRIAL PNEUMATIC	RADIAL			
	RADIAL	MICHELIN XZM2+ MICHELIN X STACKER 2 MICHELIN X STACKER 3 HD		

INDUSTRIAL WHEELS



INDUSTRIAL MULTI-PIECE WHEEL



PRESS-ON WHEEL